

De Fil En Épingles

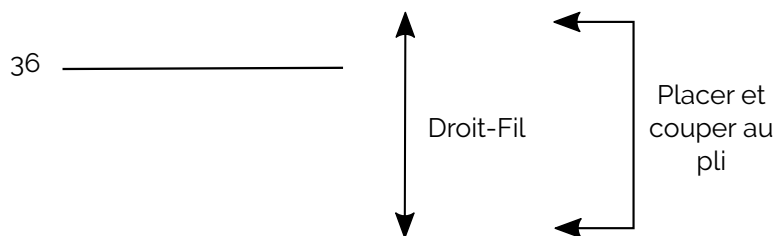
TOP ELORA

Marges de couture incluses

Chaîne et trame

Tuto de montage :

www.de-fil-en-epingles.com/coudre-top-elora



De Fil en Epingles - <https://www.de-fil-en-epingles.com/>

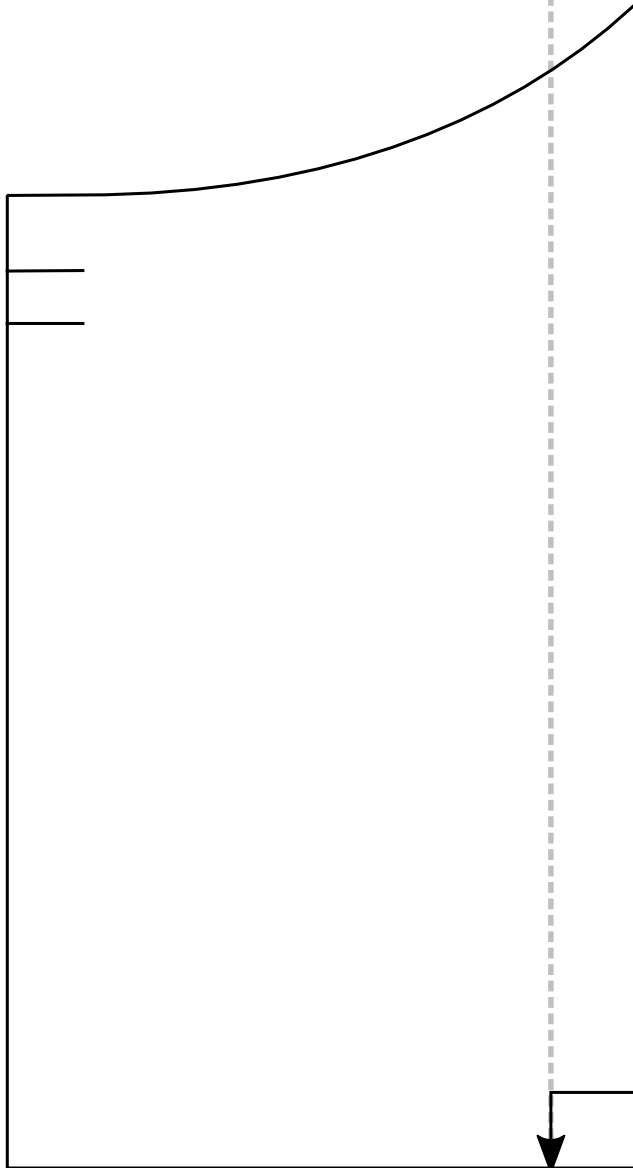
Modèle déposé et réservé pour un usage privé uniquement.

Toute reproduction ou commercialisation, même partielle, de ce modèle est strictement interdite.

Carré test
5 x 5 cm

E
Bretelles
Couper x2

A2



A diagram of an A3 paper template. It shows a large rectangle with a dashed border. A solid line starts from the left edge, curves upwards, then turns 90 degrees to the right, and continues horizontally to the right edge. The text 'A3' is centered in the middle. To the right, the text 'B' is centered vertically. Below 'B', the text 'Dos' is centered vertically, followed by 'Couper x1 au pli' centered vertically. At the bottom, a horizontal line with an arrowhead pointing left is positioned above the bottom dashed border.

A3

B

Dos

Couper x1 au pli

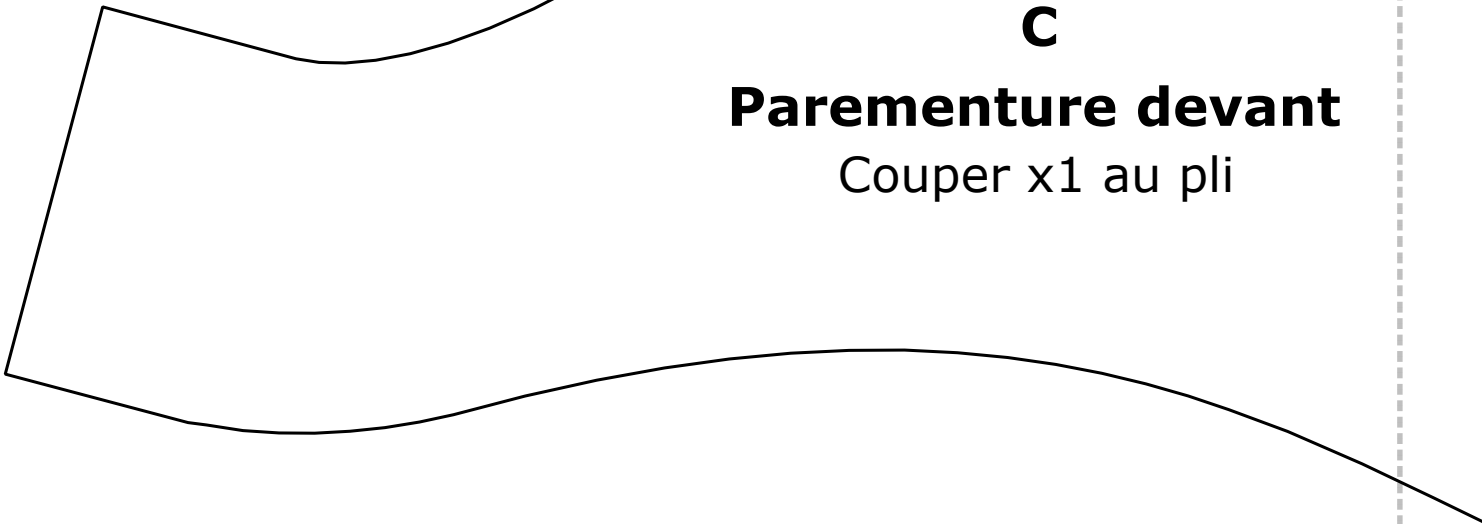
A4



C

Parementure devant

Couper x1 au pli

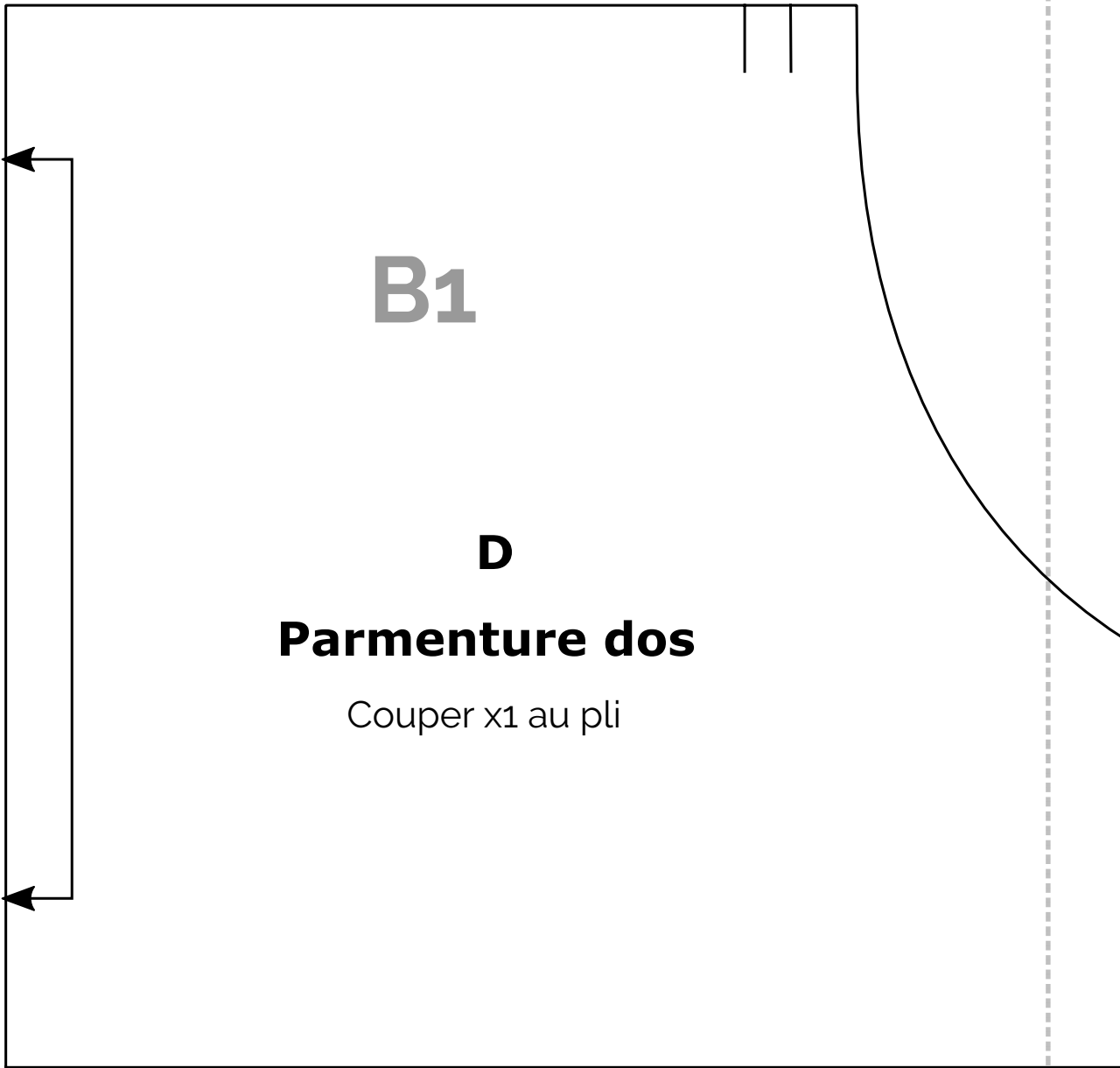


B1

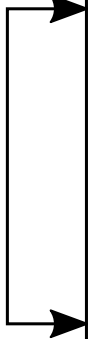
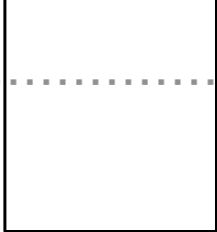
D

Parmenture dos

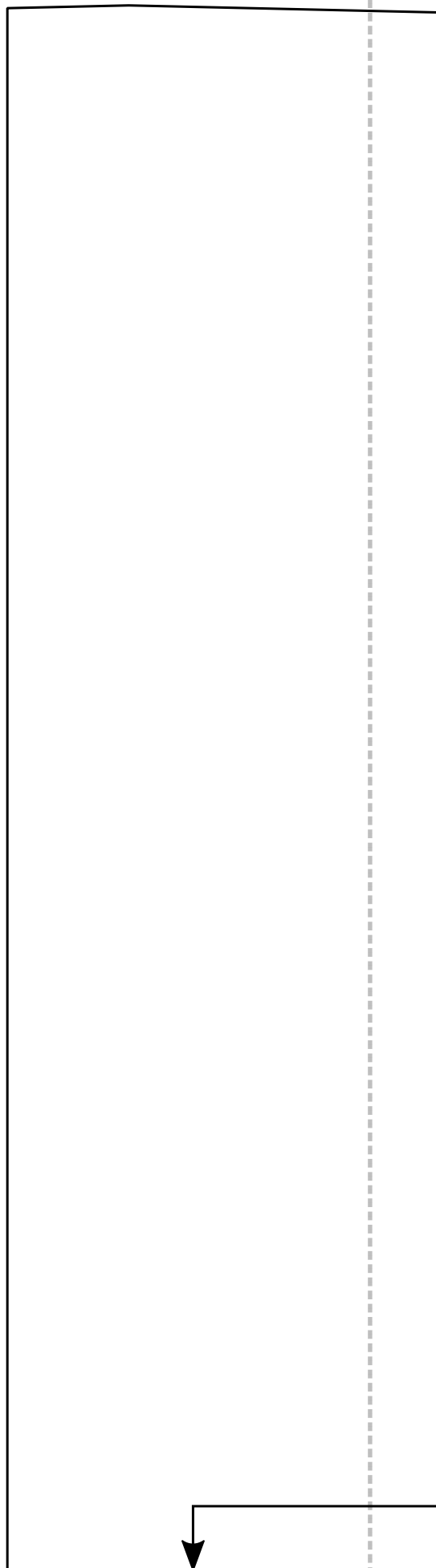
Couper x1 au pli



t



B2

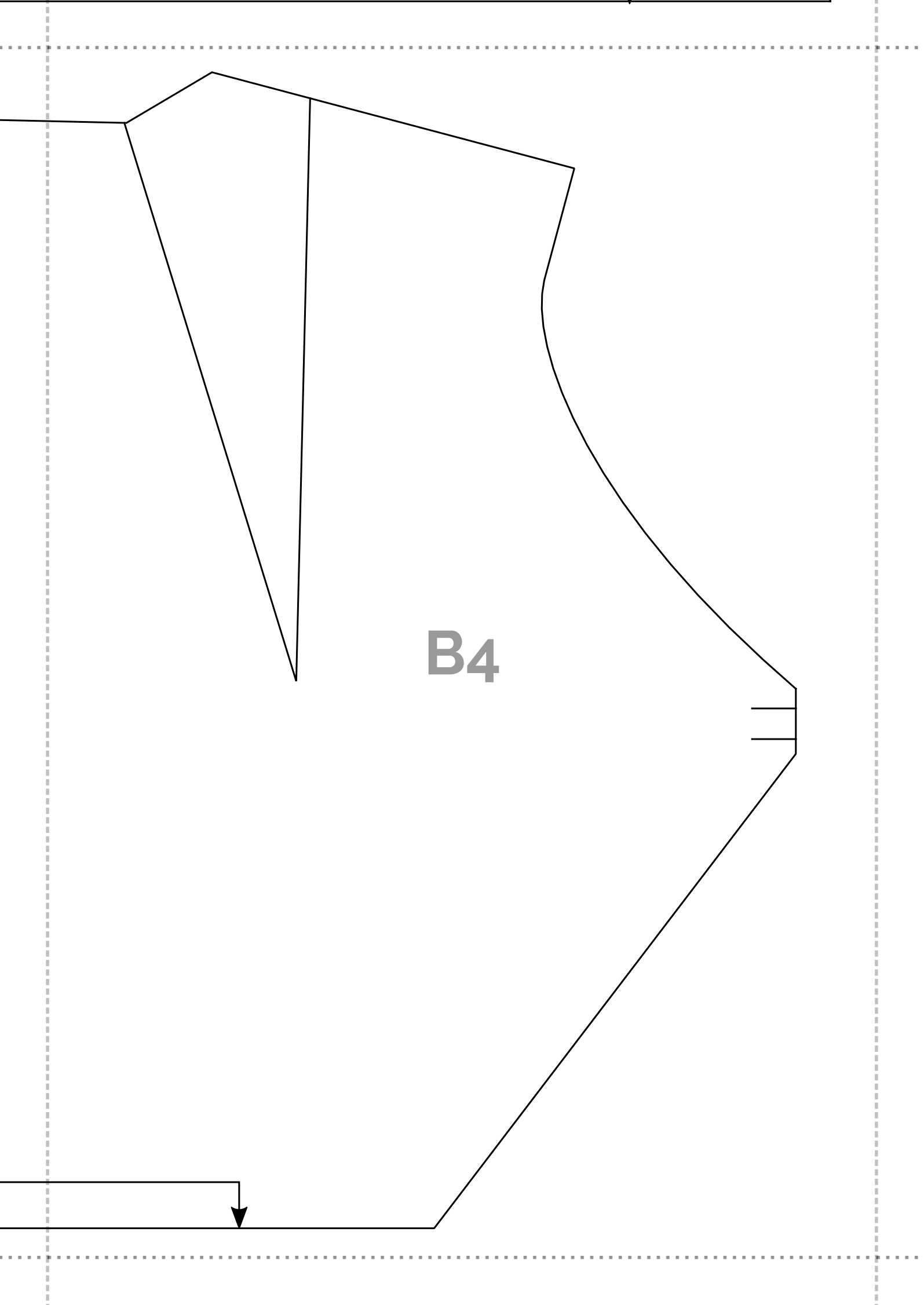


A

Devant

Couper x1 au pli

B3



B4